

RTView Datasource - TIBCO EMS

TIBCO EMS – Server Configuration

RTView can be used to subscribe to EMS topics (consuming queues is not supported).

Proper setup of RTView for subscribing to EMS topics requires that the following environmental variables are defined:

RTV_USERPATH: location of EMS jars

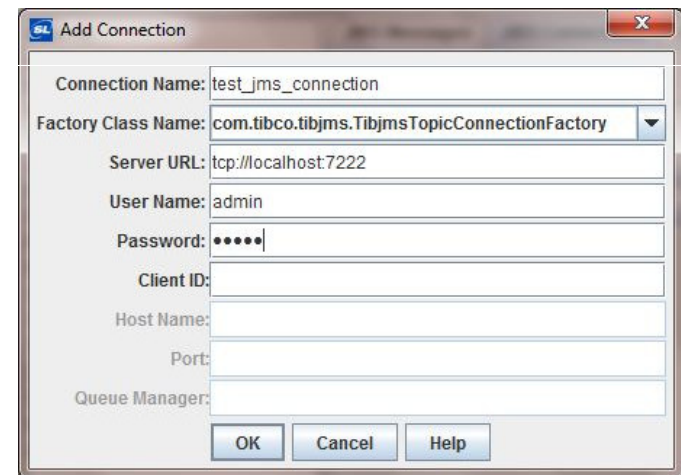
For example:

C:\TIBCO\ems\clients\java\tibjms.jar;C:\TIBCO\ems\clients\java\jms.jar

To configure, select Tools>Options>JMS>JMS Connections

1. Add Connection

- Create Name for JMS Connection
- Select Factory Class Name
- Specify URL of EMS Server
- Enter User Name and Password
- Specify Client ID (optional)



TIBCO EMS – Configure Topics

2. Configure JMS Topics

- Select Tools>Options>JMS>JMS Messages
- Select Connection associated with topic
- For 'Topic Name', type the topic name
- (Optional) Select Durable name
- Click 'Add'
- Click 'Apply' and 'Save'

All JMS related settings are saved in JMSOPTIONS.ini

TIBCO EMS – Data Simulator

- Publishes simulated JMS topics to the local EMS server on port 7222 (default):

```
orders.STATUS.*  
WEATHER.REGIONAL.*
```

- Invoked by the command

```
Start>Programs>Enterprise RTView>Simulators>TIBCO JMS Simulator
```

or

```
run_jmssimdata.bat -jmsclient:<> -jmsfactory:<> -jmsserver:<>  
-jmsuser:<> -jmsspassword:<>
```

See Appendix D>JMS Data Attachment in Documentation for all command line options

TIBCO EMS – Nested/XML Messages

- RTView allows you to display data in nested EMS fields and XML fields in EMS messages.
- Create aliases in JMSALIAS.ini for top-level messages, nested messages, nested fields, and XML fields in EMS messages.
- To define an alias in **JMSALIAS.ini** use the following syntax:

aliasName connection subject fieldNameList

Example:

```
allNames MyConnection orders.STATUS.* sales::customer_info::NAME  
OrderInfo MyConnection2 orders.STATUS.* $xml:OrderData
```

JMSALIAS.ini must be created manually using a text editor

Exercise

Ex 1: Connect Bar Graph to JMS Message

1. Confirm that your local EMS server is running by invoking the Windows Services Dialog
Start Menu>Run>services.msc
2. Search for “TIBCO EMS Server” and confirm that it is running
3. Start>Programs>Enterprise RTView>Simulators>JMS Simulator
4. In Display Builder, select Tools->Options->JMS->JMS Connections
5. Choose the “Add Connection” button.

Connection Name: jmsTest

Factory Class Name: com.tibco.tibjms.TibjmsTopicConnectionFactory

User Name: admin

Password:

6. Click on “Save” and “OK”

Exercise

Ex 1: Connect Bar Graph to JMS Message (cont)

7. Edit>Add. Select and place a Bar Graph from “Graphs” palette.
8. In Object Properties, right-click on Data:valueTable and select “Attach to JMS”
9. In the JMS Dialog, enter the following values:

Connection: jmsTest

Destination Type: Topic

Topic Name: orders.STATUS.*

Data Mode: Fields only

Message Field:

CUSTOMER;PERCENTCOMPLETED

